

NEW HAMPSHIRE

World Fellowship

CENTER

The New Hampshire World Fellowship Center is a vacation center that offers a unique environment to renew body, mind and spirit. Set amid 430 acres in New Hampshire's White Mountains, the Center invites people from diverse social, intellectual and cultural backgrounds to share their vacations and ideas in our peaceful, rustic setting. Families and singles of all ages quickly become part of the World Fellowship community.

Established in 1941 as a non-profit organization, World Fellowship has been called a "camp with a social conscience." The Center promotes peace through inter-religious and multi-cultural events, providing opportunities for people of different backgrounds to meet and dialogue on the issues of the day. The international flavor of the Center and its environmental beauty create a vacation to remember. Come and join us: relax, live, learn and make new friends for life.

SUMMER 1997

Join us in our 57th Summer Season

June 20-27 23rd New Hampshire Symposium

General Daily Schedule

Breakfast Buffet- 8-9am

Body Movement Classes-
schedule varies before or
after breakfast

Daytime programs, discus-
sions & lectures- 10am

Children's Fellowship-
10-12am, ages 3-9;
7:30-9pm, ages 6-14.

Lunch- 12:30pm

Dinner- 6pm

Evening programs,
discussions & lectures- 8pm

Friday nights- Fun Night

Saturday nights- Special
Guest Performing Arts

Other things to do-

Nature walks with
Dave Eastman

Hike in the White Mountain
National Forest

Swim, boat or fish

Visit North Conway Village

Visit Wolfe Refuge

Explore the Mount
Washington Valley

Play volleyball, soccer or
basketball

Relax and enjoy the peace
and beauty of the World
Fellowship grounds

Beyond the East? Heading West? East German Perspectives and Prospects in the United Germany

Current developments in the new German states. What is happening in the East and why? What role does the GDR play in the thinking and actions of the East German population? How strong is the influence of the West? Is East Germany going its separate way? The various seminars will analyze the political, social, economic, and cultural factors shaping the current situation in East Germany. Organizer, facilitator: Professor Margy Gerber, Bowling Green State University.

June 27-July 3 Week of Specials & 20% discount

20% discount for 3-day minimum stay

Saturday -Thursday: Daytime Soccer Sessions

For all ages, coached by Ashley Hammond, former professional soccer player in England, now professional trainer for the Montclair United Soccer Club. Ashley's Soccer Camp, founded 1991, believes that children of all ability levels should have a fun, educational, and supportive soccer experience.

Authentic Asian Health and Martial Arts System

Instructor, James Thompson is the founder and director of Bubushi Karate Dojo, Brooklyn.

Friday 27, 8pm Get Acquainted

Saturday 28, 10am Co-housing

Peter Jessop, President, Integrity Builders, General Contracting; development committee member and general contractor for Pioneer Valley Co-Housing Community; Habitat for Humanity. Mary Kraus, Healthy Homes Architect, Architect for Pioneer Valley. Nancy deProse, resident of Pioneer Valley.

7:30 pm Straw Bale Construction & Healthy Homes and Ecology

Slide show and discussion of differing techniques and its place in a sustainable and toxin-free living environment with British architect, Maureen Westrick, founder of Straw Works, Conway, NH and Mary Kraus. Followed by music and dance.

Sunday 29, 10am Co-housing Part II

8pm Habitat for Humanity

Building houses in Guatemala. A slide program by Peter Jessop.

Monday 30, 8pm

Soccer - Taking the Country by Storm

An evening with coach, Ashley Hammond.

Tuesday, July 1, 8pm An Evening at the Movies - something for everyone

Wednesday 2, 8pm Meet Filmmaker, Robin Lloyd

Two short films: *Haitian Pilgrimage*- stunning documentary follows a Haitian-American family back to its cultural roots, where Christianity and voodoo live in harmony; and award-winning *Black Dawn*- Haitian paintings spring to life in this animated folktale that explores Haitian history. Comments by Carline Roberge, Haitian, and husband, John, who founded and supports a home for street boys in Port-au-Prince.

Thursday 3, 10am Film: *The Columbia Connection*

Insights into the indigenous population of that country and our drug war. A film by Robin Lloyd.

July 3-6 Perspectives on July 4th

Thursday 3, 8pm Foul Ball

The pervasive use of child labor in Pakistan in the manufacture of most soccer balls sold in the U.S. What is happening and what can we do about it. Video and discussion by Liz Kelner, social worker.

Friday 4, 4pm The Declaration of Independence and Bill of Rights: Cries of Freedom

Kenny Schaeffer, public interest lawyer.

Games from Around the World. Cookout!

8pm Fun Night, in-house talent show

Saturday 5, 10am

A Declaration of In(ter)dependence

We explore, not just our connection with this nation, but tell stories that show our interconnection with the entire world. Stories of other-than-Americans, other-than-humans, other-than earthlings. Discussion led by poly-culturist and theologian, Marc Mullinax, Ph.D.

4pm U.S. Militarization and its Impact on South Korean Women

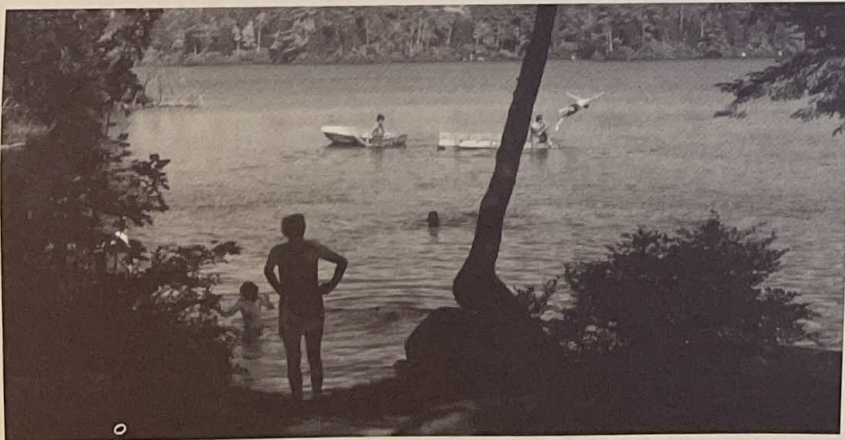
American military interests and how they are integrated with the sex industry in S. Korea and the USA. Sook Min Mullinax, C.S.W., helped former sex workers in Korea find new lives and livelihoods. Discussion and video, *Point of View* (PBS).

8pm Sol y Canto, Latin Song & Dance

Brian and Rosi Amador.

Sunday 6, 10am A Male Sociologist's View of Feminism

Gordon Fellman, Professor of Sociology, Brandeis University.



"I often think of the warm fellowship I experienced last summer- the good food, the lectures and the marvelous lake with its rafts and boats."
- E.C.

July 6-13 Jewish History and Culture

Sunday 6, 8pm Middle East Peace Process Update
Gordon Fellman, Brandeis University.

Monday - Saturday: Yiddish lessons

Paula Parsky has taught Yiddish at WF since 1994. Her class attempts to reach people at all levels of proficiency, through readings, discussions and music. Students who are not familiar with the Hebrew alphabet may want to bring a tape recorder to the lessons.

Lectures and Discussions with Irene Runge

"Sociologist in residence" American-born, Irene Runge, Director of the Center for Jewish Culture, Berlin, Germany, and author of many books, will lecture throughout the week on the following topics:

- Why did you stay, why did you come back?
- Of Jewish life and congregations in E. and W. Germany.
- The political changes of 1989 from an Eastern European Jewish perspective. Who are We?
- Germany- a country of choice for Jewish immigrants?
- Aspects of Jewish Life in United Germany today.
- Report of the Fourth Jewish Roundtable, May '97, Berlin, "It's nice to be Jewish - With Jewish Pluralism into the 21st Century."

Monday 7, 8pm What American Jews should know about their grandparents!

Eric Vieland, Executive Director of the National Yiddish Book Center and Editorial Board member of the *Paken-Treger*, magazine of the National Book Center. Also, Jeffrey Sharlet, editor-in-chief, the *Paken-Treger*.

Tuesday 8, 8pm Yiddish Revival: a mass movement?
Eric Vieland, Jeffrey Sharlet

Wednesday 9, 8pm Organizing Young Jews: a leftist perspective Eric Vieland, Jeffrey Sharlet

Thursday 10, 8pm Ring Around the Circle

The history of the Workmen's Circle/Arbeter Ring and what it can be today for progressive secular Jews. A discussion with Michael Katz. Active Yiddish, Mike Katz and Linda Gritz are a "mixed" marriage, Linda grew up at Camp Kinder Ring of the Workmen's Circle and Mike at Camp Kinderland, formerly of the IWO. They have been instrumental in the Revival of the Workmen's Circle in the Boston area.

Friday 11, 8pm Fun Night: Folk Dancing & Yiddish Sing-along led by Linda Gritz

Saturday 12, 8pm "Froyen Lider"-

A musical celebration of women's lives

Fraidy Katz and friends.

Sunday 13, 10am Jews in European Art

A visual presentation by Frances and Peter Marcuse.

July 13-20 2nd Annual Music and Dance Week

Early Italian Music & English Country Dance

Students, observers, dancers, and players will be transported into the heady splendor of 16th & 17th century Italy (with peeks into the 18th). English Country Dance & kindred dance forms work their irresistible magic...to live accompaniment. Ample opportunities to play, dance, and simply observe abound throughout the week, culminating in concerts & dances. **New this year:** an engaging program for children!

Jane Hershey, Rindge, NH (viols, recorders, ensembles); **Chris Rua**, Lexington, MA (recorders, viols, voice, ensembles, ECD); **Larry Wallach**, Gt. Barrington, MA (harpichord, ensembles, contra, piano); and gifted faculty adjuncts.

Sunday 13, 8pm Faculty & Adjunct Presentations

Introduction to the curriculum; planning the program for children.

Weekdays, 14-18 Master Classes

Workshops for students & children, rehearsals, Feldenkrais, led Mt. Chocorua hikes.

Monday-Thursday 8pm: Performances, demonstrations, lectures

Christopher Greenleaf's recorded Italian Renaissance Odyssey.

Friday 18, 8pm From a Long-Vanished Age

Faculty and student performances and a community dance.

Saturday 19, 8pm The Grand Finale

Harvesting the rich fruit of the week's work! Formal faculty concert, ECD at its most enjoyable, and a no-holds-barred acoustic band to beat all.

Please note: Master Class participation costs \$50 for the week's instruction. Renaissance and Baroque instruments (a=440): viol, recorder, harpsichord, flute; rental viols available if reserved by June 15. Ad hoc jams galore, ring acoustic dance band instruments and choral/madrigal/consort song scores.

For more information contact: **Christopher Greenleaf**, 42 Avondale Rd, Westerly RI 02891-5004. Tel: 401-596-3699(9am-5pm, 9-10pm) or fax: 401-596-7171.

July 20-24 Women of the World Uniting

Sunday 20, 8pm Beyond Beijing: Building the Road as We Walk

Fauzia Ahmed, South Asia program coordinator at Oxfam America. She works with women's projects in Thailand, Indonesia, India, Pakistan and her native Bangladesh. She is currently a fellow at the Radcliffe Public Policy Institute.

Monday-Thursday: Nature Photography Classes with Gina Bilander

Monday 21, 8pm Feminism in India

Slides and discussion with Beatrice Kachuck, visiting Fulbright Professor of Women's Studies at Jawaharlal Nehru University in Delhi and participant in feminist meetings in diverse sites in India in 1994-95.

Tuesday 22, 8pm That Bridge to the Next Millenium: USA Women's Studies

A discussion of Women's Studies moorings and prospects with Beatrice Kachuck, former Coordinator of Women's Studies Programs at City University of New York Brooklyn College and Graduate Center.

Wednesday 23, 8pm National Forest Issues and a Woman's Perspective

Rebecca Oreskes, Dispersed Recreation and White Mountain National Forest Wilderness Leader.

Thursday 24, 8pm Johannes Vermeer: Painting with Light

A slide show hosted by Gina Bilander, photographer.



Children's Fellowship Programs

Daily 10-12 am, for children aged 3-9 & 7:30-9 pm for children aged 5-12.

Morning programs include an arts/crafts project, which reflects environmental and recycling awareness, a group sing, games, time on the playground and a snack. Evening programs, Sunday-Thursday, feature entertaining and educational stories from around the world. During the week, the children develop and create a play to perform at Fun Night on Friday.

Parents are responsible for their children at all other times.

Babysitting is by private arrangement between parents and staff members.

July 25- 27

3rd Annual Multiracial Family Weekend

Friday 25, 8pm Fun Night

Saturday 26, 10am What do We See for the Future in the US?

Colors of the Future (new multiracial categories), Language issues. Facilitated by **Debra Chapman**, Department of ESL, Bronx Community College. 4pm A current topical film and reaction time.

8pm Evening of Music and Dance
with David Bernz and Randi Harris.

Sunday 27, 10am Multicultural Issues in the Family - an adoptive parent's perspective

Facilitators, **Susan Jordan** and **Richard Sargent** have experience in the mental health field and are adoptive parents of two children from Central America. The discussion will address issues such as maintaining ties with country of origin culture while promoting one's sense of identity and belonging in this country.

July 27- July 31

The US - Model or Obstacle for Global Development

Sunday 27, 8pm A Look at US Presidents: little known but important facts

Richard Ware, President of the Earhart Foundation.

Monday - Saturday: Soccer Program

Coach from Ashley's Soccer Camp (see June 27).

Monday 28, 8pm The Impact of Globalism

M.P. Joseph, teaching professor at Bangalore, India's United Theological College, will address the complex challenges facing peoples of developing nations, market realities of the global economy and their influence upon local communities. His perspective shows a concern about ecology and environmental stewardship.

Tuesday 29, 8pm Religious Fundamentalism in Asia Today **M.P. Joseph**.

Wednesday 30, 8pm Believers and Their Government - A Historical Perspective

Alan Thomson, minister, the Presbyterian Church USA, and scholar.

Thursday 31, 8pm Believers and Their Government - The Current Situation

Alan Thomson.

Our Staff

The World Fellowship Center functions as a summer university for American and European university students. Each year students from around the world join our staff either as an extended program to their university studies, or simply as a self-directed opportunity to learn the language and expand their education. This team effort is rounded out by a number of senior staff members, who give generously of themselves to make World Fellowship the well-functioning community every guest experiences.



August 1-7

Challenges & New Opportunities

Friday 1, 8pm Fun Night!

Saturday 2, 10am Metaphors and Meaning

The woodcuts of **Eleanor Rubin**, Coordinator of Special Services at the Museum of Fine Arts in Boston since 1978. Rubin's images have been published in *Liberation* and *Tikkun* magazines and the poster series of Syracuse Cultural Workers.

4pm Can US Citizens Make a Difference in Central America: the experience of Sister City and Sister Parish groups

Dean Stevens is a musician, songwriter and translator, born and raised in Costa Rica. For five years he has helped develop Sister City relationships between Boston area communities and re-populated refugee villages in El Salvador. Slide show.

8pm An Evening of Music & Song from Latin and North America with Dean Stevens

Sunday 3, 10am Update on Cuba

Richard Levins, Professor in Harvard School of Public Health, recently visited the island.

8pm Rosario Morales Reads Stories to Feed Our Imaginations and Our Hearts

Monday-Wednesday 4-6, 10am: Writing Workshops

Jumpstart: You don't write but always wanted to. Or you do, and need a recharge. **Rosario Morales** will lead you in writing exercises under a leafy tree.

Monday 4, 8pm The Eco-Social Distress Syndrome

New and resurgent diseases in people, plants and animals, dying lakes and forests, technical sophistication and inhumanity, suggest something is seriously wrong in our relations with the rest of nature and each other. **Richard Levins** will discuss the politics of ecology.

Tuesday 5, 8pm Women's Health Technologies: sifting miracles from menace

Judy Norsigian, co-author, *The New Our Bodies, Ourselves*.

Wednesday 6, 8pm Breast Cancer and the Environment **Judy Norsigian**

Thursday 7, 8pm Healthy Homes

Materials, methods and building types to promote a toxin-free built environment. **Maureen Westrick** is a British architect; founder of Straw-Works, Conway NH.

August 8-10

A Celebration of Astronomy

Friday 8, 8pm Fun Night with Star Party

Saturday and Sunday

Multimedia Presentations will feature the latest developments in astronomy from Cosmology, Planetary Science, Space Science to the 1996 discovery that life may have existed on the planet Mars. Gain a deeper appreciation and insight to astronomy as it tries to answer the fundamental question; where we came from and where we are heading. Win prizes with the Star Quiz. Presentors include **Jack Greenblatt**, who has a Masters in Physics, amateur astronomer.

Saturday 9 Star Party and Jam Session

Bring your flashlights and musical instruments.

August 10-14 Health & Education

Sunday 10, 8pm World Fellowship's History
Christoph Schmauch, WF Executive Director.

Monday 11, 8pm The Growth of Complementary and Alternative Medicine (CAM)

Even within the expanding confines of Managed Care, a paradigm shift in health care is underway in the direction of prevention, accomodation and patient responsibility. An overview and discussion of the politics, economics and reimbursement issues. **Jerry M. Kantor**, vice president of Convergent Medical Systems, Inc., a health care consulting firm.

Tuesday 12, 8pm Classical Homeopathy

An important CAM model, offering a radically different approach to health than found in conventional biomedically based models of care. Its philosophy, scientific foundation, efficiencies, limitations and implications for the emerging health care paradigm. **Jerry Kantor**, classical homeopath, licensed acupuncturist, graduate of Nanjing College of Traditional Medicine's Advanced Acupuncture Program for Foreign Students.

Wednesday 13, 8pm Hot Topics in US Education

Susan DeJesus has been in public education in NYC and Puerto Rico for over 20 years. She is currently the Central Project Director for HS Bilingual/ESL Programs in New York City Public Schools and a research associate at Lehman College (CUNY).

Thursday 14, 8pm Two Tier Education in the US, focusing on the poor Susan DeJesus.

August 15-17 Crime and Punishment — 90's Style: the Left response

A series of informative programs and discussion with an eye towards activism around these many issues. Facilitated by **Sean Maher**, criminal defense attorney at the Fulton County Public Defender's Office, and **Tanya Greene**, who specializes in death penalty defense work as a staff attorney at the Southern Center for Human Rights, both in Atlanta GA.

Friday 15, 10am The intersections of Race, Poverty and the Death Penalty

8pm Fun Night

Saturday 16, 10am Gender and the Exploding Numbers of Incarcerated Women

8pm **Dreamers & Demons: an Evening with Hammerstein, Sondheim & Friends**
Lynne Jackson, Mike Palter, vocalists and musicians.

Sunday 17, 10am Class and the Growing Prison Industrial Complex

August 17-21 Film Festival

Sunday 17, 8pm Film: Out at Work

Documentary from the 1997 Sundance Film Festival, chronicles the stories of three gay workers, raising critical issues about workplace rights, legislation and the human rights of us all. Filled with humor and insight. Shown by co-producer, **Tami Gold**, award-winning video artist and Communications Professor at Hunter College.

Monday 18, 10am Film: Emily & Gitta

Emily is a child of Holocaust survivors. German, Gitta grew up thinking of herself as innocent - not responsible for the actions of her parents during the war. Almost as soon as it begins their relationship is threatened by history and memories they do and do not share. **Tami Gold**.

8pm Film: Rough Side of the Mountain: Portrait of an African-American Vietnam Veteran

The story of Clarence Fitch, an anti-war activist, who overcame a 13-year drug habit to bring awareness about racism, militarism and human perservance to young people, especially youth of color and those from disenfranchised communities. **Tami Gold**.

Tuesday 19, 8pm Film: Protected

Dramatised documentary describing life on the Queensland Aboriginal reservation of Palm Island from 1950 to 1968. Includes a 1967 strike which was the first time that Aborigines had fought for self-determination. Presented by Australian producer, **Carolyn Strachan**, who teaches at the Borough of Manhattan Community College.

Wednesday 20, 8pm Film: Walkabout

Two British children in the Australian outback are helped by an Aboriginal boy. **Carolyn Strachan**.

Thursday 21, 8pm Film: Vincent

A documentary about Vincent Van Gogh, narrating his journey from working as an evangelist with miners to becoming a painter. Told through letters to his brother, Theo and his own art. Produced by **Paul Cox**, Dutch filmmaker. Introduced by **Gina Bilander**, photographer.



1997 World Fellowship Board of Trustees

Jane Becker and Joe Fine, Chairs

Gina Bilander

Patricia Cantor

Anita Findling

Judy Jacobs

Liz Kelner

Peter Lowber

Frances Marcuse

Robert Meeropol

Robert Rosofsky

Kenny Schaeffer

Anita Shapiro

Jim Sheridan

Flo Stern

Victor Treschan

Robert Tuman

Michael Werner

Linda Wheeler

Body Movement Classes

Paneurhythmy - all summer - with Joan Reynolds. Graceful movement in a circle with music, and affirmations to center you for the day (from Bulgaria).

Authentic Asian Health and Martial Arts System - June 28-July 6 - with James Thompson. Grace under pressure, self-confidence, goal orientation, assertiveness, calmness and concentration are learned.

Yoga - July 7-13 - with Agnes Norsigian. Yoga is developing awareness and coordinating the breath, the movement and relaxation.

Feldenkrais - July 14-18 - with Elyse Landesburg. Slow, deliberate, effortless and painless movements result in increased flexibility, coordination and grace.

Stretching, Yoga, Massage - July 21-August 3 - with Brenda Kurz. Brenda is trained in many schools of body movement and develops programs tailored to individual needs.

Qi Gong and Aikido - August 4-17 - with Jerry Kantor. Slow, graceful movements are practiced to refresh one's physical, emotional and spiritual health, to activate what the Chinese call "qi", or vital energy.

Tai Chi - August 18-September 1 - with Vernon Edwards. Tai-Chi Chuan can be seen as the highest of the martial arts. Objectives include harmony of the mind, promotion of health, the attainment of rejuvenation and longevity.

August 22-24 Out of Ireland

Friday 22, 8pm Fun Night

**Saturday 23, 10am 800 Years and Counting:
The Historical Background to Ireland's
English Problem**

Are you confused by media portrayals of Ireland's political upheavals as "tit for tat" killings in a medieval religious war? **Jan Cannavan** will discuss the origins of this conflict and its economic, cultural, geopolitical roots. She has taught Irish history at Binghamton University and New York City's Irish Arts Center.

4pm Film: Mother Ireland

By Derry Film and Video Collective for Channel 4 TV in Britain, which explores women's contribution to Irish nationalism and the interplay of republicanism and feminism. This film was banned by British censors. **Jan Cannavan**.

8pm Celtic Music

Jane Wilcox Hively sings and plays Celtic Harp and guitar; **Jon Hively** plays hammered dulcimer, Irish and Scottish bagpipes, the penny whistle, bodhran and saw.

**Sunday 24, 10am No Freedom without
Women's Freedom**

This lecture/discussion will trace the evolution of modern Irish feminism from early Celtic roots and assess the extent of Irish women's progress to date. **Jan Cannavan** specializes in Irish women's history.

8pm Film: Out of Ireland

The mid-nineteenth century famine, setting the stage for one of the first big waves of European immigrants to America - and changing America's notion of itself. America became a "nation of nations". The profound historical and psychological consequences which are our heritage as a nation of immigrants.

World Fellowship Directors

In 1941, Charles and Eugenia Weller, social workers with a global perspective, founded World Fellowship. They were the directors until 1952.

From 1953-1969 Willard and Ola Uphaus, religious leaders and educators, directed the Center. Their nationally celebrated commitment to civil liberties during the McCarthy period made the Center known throughout the country.

Current directors, **Christoph and Kathryn (Kit) Schmauch** have been with World Fellowship for almost 30 years. Sharing a commitment to education, peace and justice, they have provided creative leadership to a dedicated Board of Trustees, and have expanded the facilities and programs steadily for an ever-growing constituency.



August 25-28 Honoring Labor

**Monday 25, 8pm Northern New England is
Different**

A slide show on the uniqueness of the natural world in our region. **Mary-Agnes Wine**, naturalist and retired Professor of Zoology, Bowdoin College, and popular Elderhostel and AMC program leader.

Tuesday 26, 8pm United Farm Workers Union

Jessica Govea, founding member of this union 32 years ago, a farmworker since age 4. Active in labor, community and political organizing, she currently directs the Union Leadership Academy at Rutgers University.

Wednesday 27, 8pm Community-Labor Coalitions

Panel Discussion with **Dr. Elaine Bernard**, Executive Director of the Trade Union Program at Harvard University. **Nancy deProse**, Vice President Local 2322, United Auto Workers; steering committees of Jobs with Justice and Workers Rights Center. **Jon Weissman**, President, National Association of Letter Carriers Branch 46, Vice President of Pioneer Valley Central Labor Council AFL-CIO, and steering committee of Jobs with Justice.

**Thursday 28, 8pm We Were There - a multimedia
women's labor history program**

Created by **Flo Stern** - union activist, union educator; taught at Cornell University; Hofstra University's District 65 Program; UCLEA staff for 13 years; president of a local union. Music by **Bev Grant**, singer/songwriter and choral director; formerly leader of the band *Human Condition*. She has been cultural director of UCLEA staff for 7 years.

August 29-September 2 Annual Labor Day Weekend Music Festival

This festive weekend features musicians: **Bev Grant**, vocal and guitar; **Boys of Bedlam's David Gass**, fiddle and keyboard; **Ted Sillars**, drums; **David Goss**, guitar-plus accordion and bass.

Friday 29, 8pm Fun Night

**Saturday and Sunday,
10am and 4pm, Workshops
with the Musicians**

Workshops include: Choral Singing; American Folk, Cajun/Zydeco, early Rock; World Folk, Yiddish; Drumming and Making Instruments and Music for Children.

**Saturday 30, 8pm Performance
by all Musicians**

**Sunday 31, 8pm Jam Session
and Grand Singalong**

**Monday 1, 8pm The Great
American Songbook**

Everyone plays and sings.

**Tuesday 2, Breakfast and
Farewell**



The Boys of Bedlam will add to the festivities of the Annual Labor Day Weekend Music Festival.

A summer vacation to renew your spirit- make reservations today.

Programs

World Fellowship Center offers an array of optional programs daily. Typically, mornings begin with a **body movement class**. **Discussions and lectures** usually begin at 10am. **Nature programs** are scheduled throughout the summer. It is as easy to plan an afternoon hike in the White Mountains, as it is to relax with a book or swim in the lake.

Children's Programs operate daily, 10-12 AM, ages 3-9; 7:30-9 PM, ages 6-14. **Fun Night** is Friday night with an inhouse talent show or special guest performances. Saturday nights bring a **special music events**. This program lists times of most events and others will be posted as the event week begins.

Recreational Facilities

World Fellowship has frontage on **Whitton Pond**, the clearest water you will find anywhere. This mile-long lake, nestled in the woods, is a sanctuary for a pair of nesting loons which return every year. It offers you extraordinary experiences of Nature's summertime pleasures: swimming, canoeing, rowboating, fishing, blueberry picking. The grounds also feature a **basketball court, volleyball court, soccer field, state of the art playground**. Two new nature trails are ready with self guided tours. The **Recreation Hall**, next to the Farm House, hosts weekend performances seating 150.

Lodging Facilities

With Mt. Chocorua as our backdrop, our facilities run from the valley floor up the ridge of Drake Hill. All our buildings are smoke-free with shared bathrooms, kitchen, dining room, and living room facilities. All guest rooms are supplied with linens and blankets.

Lloyd Lodge, which resembles a century-old New England Inn, is the main building. It houses the office, dining hall and conference room.

The Uphaus Lodge is our most modern facility. It has 9 guest rooms and a view of Mt. Chocorua from a large bay window in the living room.

The Farm House is 200 years old and has 13 guest rooms. The **Farm House Cottage**, in the same area, has 6 guest rooms. 3/4 of a mile from Lloyd Lodge.

The Weller House is a charming 175-year old cottage with 5 guest rooms. **Thoreau Cottage**, just behind it, has 2 guest rooms. About a mile from Lloyd Lodge.

Campsites are available for campers bringing their own tents and equipment, as well as linens, pillows and blankets. Rustic tables are provided.

Dining

Meal times: 8am; 12:30pm; 6pm

Using produce from our own organic gardens, our meals are hearty, mostly vegetarian and served family style. The water from our 450 foot artesian well is pure, delicious and free of chemical treatments. Breakfast is a buffet. Thursday dinner is a cookout. Sunday noon we serve a traditional "Thanksgiving" turkey dinner. Sunday evening is a buffet. Gourmet coffee is served with all meals.

General Information

- All buildings are **smoke-free**.
- No pets, except in Campsites- where dogs must be kept on a leash at all times and cleaned up after. Please notify us in advance if you plan to bring one.
- Beach towels are not supplied.
- Guest rooms are supplied with all linens, towels, blankets, pillows. Campers must bring all of theirs.
- Be sure to bring warm clothing - New Hampshire nights can be quite cold. Bring a flashlight.



The Uphaus Lodge features 9 of our best rooms and is named after former directors, Willard and Ola Uphaus.

Reservations

Office Hours: 9am-9pm

For reservations or further information, write to:

Christoph and Kathryn Schmauch

World Fellowship

PO Box 2280

Conway, NH 03818-2280

603-447-2280 fax 603-356-5252

- All Reservations must be made in advance.
- Weekend reservations are for a minimum of two days.
- A deposit of 25% is required to confirm a reservation.
- **Cancellations with less than 10 days notice, will be charged a \$50 fee.**
- Payment accepted in cash, checks or money orders. We do not take credit cards.

Check in- please register at the office in Lloyd Lodge

Check out- Rooms must be vacated by 10:30am. Facilities and programs may be enjoyed after checkout.

Introduce a friend to World Fellowship

Give someone a birthday gift of a weekend or week at World Fellowship. Gift certificates are available and can be sent at your request.

1997 Vacation Specials

20% discount
June 27-July 3
3 day minimum stay

10% discount
July 3-August 1
1 minimum stay
5 weekdays

Rates - per person

Room rates are per person and include room, 3 meals per day, program, all facilities and gratuities. No credit given for missed meals, but box lunches are available. Campers are required to take a minimum of one meal: dinner.

Room Rates- Terrace		Weekday		Weekly
		(Sunday 3pm - Friday 3pm)	(Friday 3pm - Sunday 3pm)	
Double		\$ 36.	\$42.	\$247.
	Single	41.	47.	
Regular		\$48.	\$56.	\$329.
	Single	54.	62.	
Our Best		\$63.	\$71.	\$426.
	Single	69.	77.	
Camping -	1 Meal (dinner only)	\$22.	\$26.	\$145.
	2 Meals (bkft/dinner)	25.	30.	170.
	3 Meals	31.	36.	206.

Children - in rooms with parents or camping.

Ages 3-5 30% of Adult rate

Under 3: in rooms with parents, \$4.00/day or \$25./week; in campsites, free.

6-8 40%

9-11 50%

75% for children (any age) in separate rooms.

12-14 60%

15-21 75%

Visitor Meals - breakfast \$4. lunch \$6. dinner \$9.



NEW HAMPSHIRE WORLD FELLOWSHIP CENTER
 PO Box 2280
 Conway, NH 03818-2280



Address Correction Requested



The serenity and beauty of the woods and facilities are matched only by the spirits of the people who are there. -PN. NYC

A Summer to remember 1997

World Fellowship is located on NH Route 16, 4 miles north of Chocorua, 7 miles south of Conway.

Driving Times/Distances:

- Boston, MA: 125 mi./2.5 hrs.
- Portland, ME: 70 mi./1.5 hrs
- Hartford, CT: 235 mi./4.5 hrs.
- New York City, NY: 325 mi./7 hrs.
- Montreal: 220 mi/5 hrs.

From New York, Route 95 to New Haven; Route 91 to Hartford, Route 84E to Mass Tpke. Tpke E 10 mi to Auburn exit; Route 290 to 495 N to 95N. 95N Exit 4 to the left before Portsmouth, NH goes onto the Spaulding Tpke. Continue to the end (exit 18). The road continues as Route 16. Four miles north of Chocorua, our big sign is on the right, Drake Hill Rd. Go one mile up the hill to the main Lodge to check in.

Bus or train to Boston.

Bus service by Concord Trailways from Boston's South Station to Chocorua. We will pick you up for an extra charge.

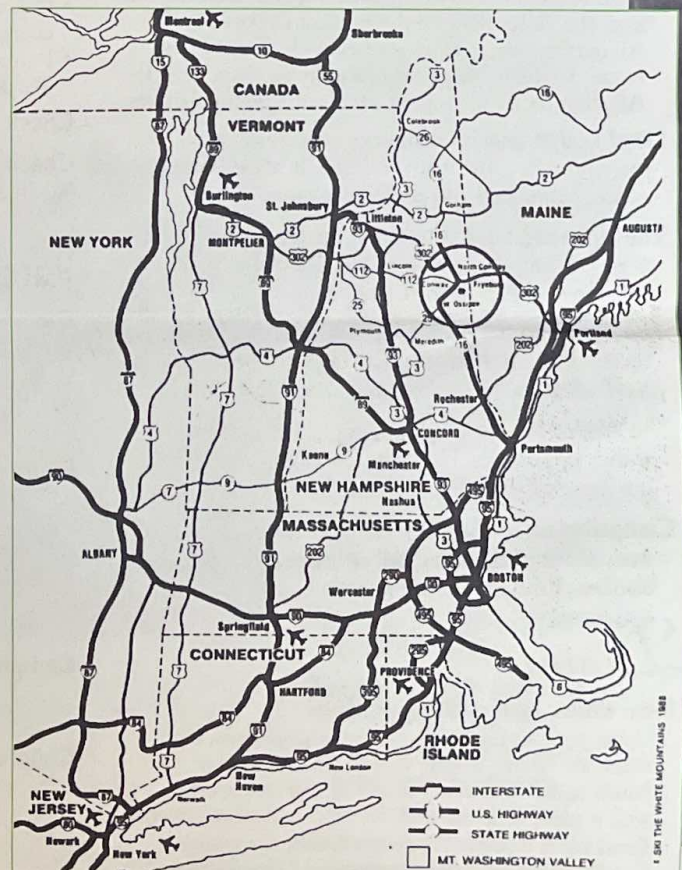
Plane service to Portland, ME,

1 1/2 hour drive away. \$40 pick-up charge.

Questions:

Christoph and Kathryn Schmauch
 World Fellowship
 PO Box 2280
 Conway NH 03818-2280

603-447-2280 fax: 603-356-5252



Cover Photo: Gina Bilander Brochure Design: OptiVox Visual Communications

"We had one of the very best vacations in recent memory."
 - R.B., New York