

A Summer Vacation to Renew Your Spirit

Set amid 432 acres in New Hampshire's White Mountains,

the Center invites people from diverse social, intellectual and cultural backgrounds to share their vacations and ideas in our peaceful, rustic setting.

The New Hampshire World Fellowship Center is a vacation center that offers a unique environment to **renew body, mind and spirit.** Families and singles of all ages quickly become part of the World Fellowship community.

Established in 1941 as a non-profit organization, we have been called a "camp with a social conscience." Charles and Eugenia Weller, social workers with a global perspective, were founders and directors from 1941-1952.

Willard and Ola Uphaus, religious leaders and educators, directed the Center from 1953-1969. Their nationally celebrated commitment to civil liberties during the McCarthy period made the Center known throughout the country.



Christoph and Kathryn

Schmauch have been directors since 1970. He is an ordained minister and ecumenical educator, and she is a teacher and administrator.

For over 50 years the World Fellowship Center has promoted peace through inter-religious and multi-cultural events, providing opportunities for people of different backgrounds to meet and dialogue on the issues of the day. The environmental beauty and its international flavor, enhanced by staff members from Europe, are more and more appreciated. We invite you to experience the unique atmosphere of the World Fellowship Center this summer.

Lodging Facilities

With Mt. Chocorua as our backdrop, our facilities run from the valley floor up the ridge of Drake Hill. All our buildings are smoke-free, and have shared bathrooms, kitchen, dining room, and living room facilities.



Lloyd Lodge which resembles a century-old New England Inn, is the main building, and houses the office, dining hall, and conference room.

The Uphaus Lodge

is our most modern facility. It has 9 guest rooms and a view of Mt. Chocorua from a large bay window in the living room.



The Farm House is 200 years old and has 13 guest rooms. The Farm House Cottage, in the same area, has 6 guest rooms. They are 3/4 of a mile from the main lodge.



The Weller House

is a charming 175-year old cottage with 5 guest rooms. Thoreau Cottage, just behind it, has 2 guest rooms. They are almost a mile from the main lodge.

All guest rooms are supplied with linens and blankets.

Campsites

are available for campers bringing their own tents and equipment, as well as linens, pillows and blankets. Rustic tables are provided.

Recreational Facilities

World Fellowship has frontage on Whittion Pond, the clearest water you will find anywhere. This mile-long lake, nestled in the woods, is a sanctuary for a pair of nesting loons which return every year. It offers you extraordinary experiences of Nature's summertime pleasures: swimming, canoeing, rowboating, fishing, blueberry picking.

- Basketball court
- Soccer field
- Volleyball court
- Playground - state of the art.

The Recreation Hall, situated by the Farm House is the site for weekend performances, with a stage, and seating accommodations for 150.

Dining

Using produce from our own organic gardens, our meals are hearty, mostly vegetarian, and served family style. The water from our 450 foot artisan well is pure, delicious, and free of chemical treatments. Breakfast is a buffet. Thursday dinner is a weekly cookout. Sunday noon we serve a traditional "Thanksgiving" turkey dinner. Sunday evening is a buffet. Meal times: 8am; 12:30pm; 6pm.

General Information

All buildings are smoke-free.

No pets, except in Campsites. Dogs must be kept on a leash at all times and cleaned up after. Let us know if you plan to bring one.

Beach towels are not supplied. Please bring your own. Guest rooms are supplied with all linens, towels, blankets, pillows. Campers must bring all of theirs.

Be sure to bring warm clothing - New Hampshire nights can be quite cold. Also a flashlight.

"I could never give you back what you gave to me. Thanks to your WF - it has changed my life." K.N. staff 1995.



Rates - per person

		Weekday	Weekend	Weekly
Adults - Room Rates	Terrace			
	Double	\$37.	\$44.	\$253.
	Single	42.	49.	286.
Regular	Double	50.	58.	337.
	Single	56.	63.	375.
Our Best	Double	65.	74.	437.
	Single	71.	80.	476.
Adults - Camping				
	Dinner 1 Meal	23	27.	148.
	Bk/Din 2 Meals	26	31.	175.
	B/L/D 3 Meals	32.	37.	210.

Minimum required: One Dinner

Children: in rooms with parents or camping .

Under 3 in parent's room, \$4.00/day or \$25 /week. In campsites, free.

3 & Older % of Adult rate (in parents room)			
Ages 3-5	30%	12-14	60%
6-8	40%	15-21	75%
9-11	50%		

90% for children in separate rooms, regardless of age.

Room rates are per person and include room and 3 meals per day, program, all facilities and gratuities. No credit given for missed meals, but box lunches are available.

Weekend rates: Friday 3pm - Sunday 3pm
Weekday rates: Sunday 3pm - Friday 3pm

We do not take credit cards. Cash, checks or money orders accepted.

Come early and save!
10% Discount!
July 2 - July 31
for a minimum of 5 weekdays.

Programs

Daily offerings:

Discussions & lectures (see listings): Most mornings at 10 AM. Evenings at 8 PM.

Children's Programs

10-12 AM, ages 3-9;
7:30-9 PM, ages 5-12.

Body Movement Classes

Scheduled by the instructor.

Other:

Performing Arts

July 5-12, September 4-8 and Saturday evenings.

Fun Night

Every Friday; our in-house talent show, guests and staff performing.

Nature Programs

Walks and Lectures - as scheduled during the summer.

Reservations

Office Hours: 9am-9pm

Christoph and Kathryn Schmauch
World Fellowship
PO Box 2280
Conway, NH 03818-2280
603-447-2280

FAX: 603-356-5252

EMAIL: worldf@landmarknet.net
Website: www.worldfellowship.org

All reservations for rooms and campsites must be made in advance. Weekend reservations will be made for a minimum of two days.

A deposit of 25% of your anticipated bill is required to confirm a reservation. Cancellations with less than 10 days notice, \$50 will be withheld from refund.

Check in

Registration at Lloyd Lodge Office.

Check out

Rooms must be vacated by 10:30am. Facilities and programs may be enjoyed after checkout til you leave.



New Hampshire World Fellowship

Join Us for Our 58th Summer Season

June 24-July 1

24th New Hampshire Symposium Differences in the East East Germany between New Beginnings and Marginalization

The 1998 New Hampshire Symposium will concern itself with minority experience and marginalization in the new German states. On the one hand the East German population, with its history, socialization, political culture, life experiences and current socio-economic situation, is different from the West German population, and, as a numerically smaller group, represents a minority within the united Germany. On the other hand, within East Germany itself there are social, economic, ethnic and cultural minorities whose "otherness" is defined by the East German minority. Organizer, facilitator: Professor *Margy Gerber*, Bowling Green State University.

July 2-5

July 4th Weekend

Friday 3, 8pm

Fun Night!

Saturday 4, 10am

Dedication of new Meeting Room. Music, *Martha Leader* *Dean Stevens*

4pm "What is There to Celebrate on Independence Day?" *Mel King*, Rainbow activist.

8pm Music on Stage

Martha Leader, Dean Stevens

Sunday 5, 10am

"The Dawn's Early Light: Independence in the Clinton Era." *Kenny Schaeffer*, Legal Aid housing lawyer.

July 5-12

3rd Annual Music and Dance Week

Musica Mediterranea: Renaissance Music of Spain & Italy

The vibrant music of the 16th and 17th centuries has always been irresistible to listeners and players alike. Our week again offers a rare and very special chance to blend the intensity of music program participants with campers' freedom to encounter the music-making process at first hand. **English Country Dance** and traditional Renaissance dance complement **comedia dell'arte** and the villancico, the famed theater-and-music forms of Italy and Spain. For the first time, **early choral music** will be as important a curriculum item as the **viol and recorder workshops**. The airy, light Meeting Room - spanking new this summer! - is home to many workshops and evening events.

Faculty: *Jane Hershey*, Rindge, NH (viols, recorders, ensembles); *Julian Cole* and *Chris Rua*, Lexington, MA (winds, polychoral, theatre-with-music, ensembles, cabaret); *Larry Wallach*, Gt. Barrington, MA (harpisichord, trad. Dance band, continuo).

Come Early and Save!
July 2-July 31
(5 day weekly minimum)

The children's program invites the younger members of the World Fellowship community to have a very hands-on introduction to the music, the theatricality, and the storylands of long ago to culminate in the children's procession opening Friday evening's concert. *Elyse Landesberg* leads **Feldenkrais** "awareness through movement" sessions 9-10 am daily. Weekdays (except Wednesday): Two morning instrumental and choral workshop periods, open to registered participants. Two afternoon workshop periods (early musical theater and traditional dance band), open to all. Evening concert and/or dance at 8pm.

Wednesday, July 8 - no day programs. Led hike up Mt. Chocorua (9:30-4) and "ye Grande Splash" afterward at Whittton Pond. 8pm, *Christopher Greenleaf's* digitally recorded odyssey through Spanish, Italian and Sephardic **Musica Mediterranea**.

Saturday July 11 - Grande Finale at 8pm. Please note: Master Class participation costs \$50 for the week's instruction. Bring: a=440 instruments for workshops, jams, and traditional dance band; comfortable dancing shoes; choral, madrigal and ensemble scores/parts; hiking foot wear.

For detailed information: contact *Christopher Greenleaf*, 42 Avondale Rd., Westerly RI 02891-5004; tel 401-596-3699 (9am-5pm & 9-10pm); fax 401-596-7171.

July 12-16

Jewish Culture and History

Sunday 12, 8pm "Israel Today"

Gordon Fellman, Professor of Sociology, Brandeis University, who will have just returned from visiting Israel, has led many study tours to that country.

Monday, July 13, 8pm

"Who is a Jew?"

Discussion led by *Gordon Fellman*.

Tuesday - July 14, 8pm

Film: **Partisans of Vilna**. Produced by *Josh Waletzky*, Academy and Emmy Award nominated director.

Wednesday, July 15, 8pm

Film: **Image Before My Eyes**.

Produced by *Josh Waletzky*.

Thursday July 16, 10am

A World of Jewish Folk

Music, in Hebrew, Yiddish, and

Ladino. *Laura Wetzler* is a singer and

songwriter.

8pm *Laura Wetzler* in a concert of

contemporary

American folk, plus

Jewish roots music.

Monday -Thursday,

Yiddish Language

lessons with

Reytl Kalifowicz-Waletzky

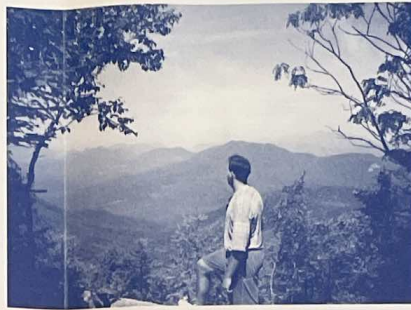
Yiddish instructor

since 1971, and

Newsletter Editor

of Events in the

Yiddish World.



July 17-19

Mumia Abu-Jamal and the Rosenbergs: Politics, Art & Censorship, Capital Punishment

Friday 17, 8pm The Rosenberg Case and Capital Punishment. *Robert Meeropol*, Executive Director of the Rosenberg Fund for Children, son of Julius and Ethel Rosenberg.

Saturday 18, 10am Recent Developments in the Case of Mumia Abu-Jamal.

Leonard Weinglass, lead attorney for Mumia Abu-Jamal.

8pm Poetry of the Political Imagination. *Marth Espada*, acclaimed as the Latino poet of his generation, and winner of the 1996 Book Award for Poetry.

Sunday 19, 10am

Our Experience with the Media.

Panel presentation and discussion, with *Robert Meeropol, Leonard Weinglass, and Martin Espada*.

July 19-26

Our Caribbean Neighbors

Sunday 19, 8pm

Puerto Rico at 100 as a US Commonwealth. Slides and discussion, with *Lillian and Edwin Rios* of San Juan.

Monday 20, 10am The Educational System in

Cuba. *Mario Barros* and *Mayda Dedieu*, two Cuban teachers who moved to the U.S. in 1995 and are currently working as bi-lingual teachers in Somerville MA. In Cuba they were English professors and performed with their comedy group *Lenguaviva* (Living Language).

8pm Songs of the American Reality as Seen Through the Eyes of Cubans. *Mario Barros* and *Mayda Dedieu*.

Tuesday 21, 10am The Women's Movement

in Cuba. *Jean Weisman*, administrative coordinator of the City College of New York Center for Worker Education, has organized numerous research trips to Cuba. She will show a video she produced, *From Maids to Companeras*, about the transformations in the lives of former domestic workers in Cuba.

8pm The Pope's Visit to Cuba - Implications for the Future. *Albor Ruiz* is a Cuban-American columnist for the New York Daily News. He reported from Cuba during the Pope's visit.

Wednesday 22, 8pm

Immigrant Experience of Caribbean Women. *Coleen Clay*, who was born in Jamaica, is a professor at La Guardia Community College and a researcher at the Caribbean Research Center at Medgar Evers College in New York, with a focus on children and parents from the English-speaking Caribbean.

Thursday 23, 10am Writing Workshop, "Jumpstart", with *Rosario Morales*.

8pm Political and Social Movements in Haiti. *Jocelyn* and *Regine McCalla*, immigrants' rights activists in the Haitian-American community. *Jocelyn* is Executive Director of the National Coalition for Haitian Rights.

Friday 24, 10am Writing Workshop continued.

8pm Fun Night!

Saturday July 25, 10am

Update on Cuba. *Richard Levins*, Professor, Department of Public Health, Harvard, will report on his recent trip.

8pm Music! Walkabout Chorus

Sunday, July 26, 10am *Richard Levins* will discuss **The Politics and Ecology of Sickness and Health**. The US spends more on health than any other first world country and yet ranks near the bottom. Why?

8pm *Rosario Morales* Reads Stories and Poems to Feed Our Imaginations and Our Hearts.



July 27-August 1

Evenings: Centennial Birthdays: Robeson, Brecht, Marcuse, Lowenfels.

Monday 27, 8pm The Paul Robeson Concerts, Peekskill 1949, (video) marked a turning point in American history. This program looks at how what happened in Peekskill reflects what was happening on the national scene. With *Abby Luby*, videographer, *Mike Dimeo*, producer, *Marilyn Elie*, storyteller.

Tuesday 28, 8pm Bertold Brecht, Poet, Playwright and Critic. *Annette T. Rubinstein*, teacher, author of *American Literature, Root and Flower* and *From Shakespeare to Shaw*.

Wednesday 29, 8pm 1868-1968-1998: Herbert Marcuse and the Critical Left, the enduring and changing dimensions of capitalism in our century. *Peter Marcuse*, who is the son, teaches urban planning at Columbia University.

8pm *Walter Lowenfels*, poet by grandson Paul Jacobs

Friday 31, 8pm Fun Night!

Nature Programs with Dave Eastman

Monday,

July 27, 10am

WF Nature Trail Walk

Tuesday,

July 28 10am

Slide Show on Blue-birds

Birdhouse Kit building.

Wednesday,

July 29, 10am

Chocorua Birches Walk

Thursday,

July 30, 10am

Wildlife Shrubs:

slides and walk on

WF grounds.

Friday

July 31, 10am

Building a short

nature trail:

hands-on class.



Workshop Center

erson...

August 1-7

The Future of Europe

Saturday 1, 10am
The Baltic States, Latvia, Lithuania, Estonia; former Soviet Republics solving social, and political problems of independence since 1990; how western Europe is involved. *Norma Wassel*, social worker, Boston, who has been visiting the area since 1993 to help them in the development of social policy.

8pm Music: Taproot.

Sunday 2, 10am Turkey-European Relations: Cooperation and Problems. Professor *Barbaros Celikkol*, University of New Hampshire, Mechanical Engineering. 8pm European Students Respond to the EU. Representatives of WF staff.

Monday 3, 8pm Young People in East and West Germany Today. *Rainer Hoffmann*, high school principal, Hoyerswerda, on the German-Polish border.

Tuesday 4, 8pm Educating Young Germans for the New Europe. *Rainer Hoffmann*.

Wednesday 5, 8pm Origins of the European Union; rebuilding of hopes for a

Nature
Photography
Workshop
10am, M-F
Gina
Bilander



August 8-9

Non-Traditional Families

Saturday 8, 10am A Sharing. Facilitators: *Flo Stern* and *Nancy deProsse* have adopted an African-American boy and two sisters from Russia. They live in a co-housing development in Amherst, MA.

8pm Music: *Pat Humphries*

Sunday 9, 10am This is Our Family.

Eppie and *Charlie Bodie*, a Jewish/African-American couple, share their story and invite others to do the same.

August 9-13

The Middle East

Sunday 9, 8pm A Study Tour to Jordan and Israel. *Christoph* and *Kit Schmauch*, WF Directors, show slides and report on their January trip with Jesus Seminar founder, Robert Funk. ABC-TV taped the tour for a Peter Jennings special, that was broadcast in April.

Monday 10, 10am What is Islam? Who are the Muslims? Video presentation and discussion. *Kahled Mansour* is a Washington, DC-based journalist for the Middle East News Agency (Cairo, Egypt).

8pm Islam as a Political Movement. *Kahled Mansour*.

Tuesday 11, 10am Checkpoint. 8pm The Kurds: Who, What, When, Where, Why. *Maggy Zanger* is the publications manager for the Center for Contemporary Arab Studies at Georgetown University in Washington DC and former assistant editor of Middle East Report magazine.

Wednesday 12, 8pm Decoding the Violence in Algeria. *Maggy Zanger*.

8pm US Policy in the Middle East. *Phyllis Bennis* is a fellow at the Institute for Policy Studies in Washington DC, and author of books on the Palestinian Intifadah and US-UN relations.

Thursday 13, 10am Checkpoint - a video about Palestinian life under occupation.

8pm Israel and Palestine: 50 Years of Struggle. *Phyllis Bennis*.

August 14-16

Human Rights Struggles

Friday 14, 8pm Fun Night!

Saturday 15, 10am All Human Rights Guaranteed, All Actors Held Accountable. A critical presentation, and then discussion concerning International Human Rights, as the 50th Anniversary (Declaration of 1948) of the Universal Declaration of Human Rights approaches. *Grahame Russell*, Canadian; Lawyer, Human rights activist, Educator.

8pm Music! *Sol y Canto*.

Sunday 16, 10am Guatemala;

Human rights situation, past, present, future. *Grahame Russell*. 8pm Chiapas; Human rights situation, past, present, future. *Grahame Russell*.

August 17-20

A Glimpse of Asia

Monday 17, 8pm Vietnam - Still with us. *Tom Forbes*, infantry veteran; *Dave Eastman*, helicopter veteran; *Richard Ware*, President, Earhart Foundation.

Tuesday 18, 8pm Taiwan- Chinese Issues Today. *Pojen Lee*, native of Taiwan, pastor of Jackson NH Community Church.

Wednesday 19, 8pm A Chance to Develop a play with *Stephen Mantin*, a teacher and a playwright, whose work, *Acts of Faith*, was recently produced in New York.

Thursday, 20, 8pm The World Fellowship Players! Presentation of the play.

August 21-23

After the Cold War: Two Southern Transitions

After the fall of the Soviet Union in 1989, the dynamics of international politics changed dramatically.

Saturday 22, 10am Cuba - 1998.

The economy, the aftermath of the Pope's visit, changes among Cuban Americans, the Embargo, and legislation in Congress. *Ramon Bueno* is the Cuban-American Committee Research & Education Fund Board President. He has been active since the early Eighties among Cuban-Americans seeking change in US-Cuba relations.

8pm Music: *Joanne Hamill*

Sunday 23, 10am The Great Lakes Region of Africa - This region (Rwanda, Burundi, Zaire/Congo, Uganda, Tanzania)

has under gone overwhelming change and tremendous violence in this decade. *Marc Sommers* is an independent consultant, and a Research Fellow at Boston University's African Studies Center.

8pm Women to Women:

Making Connections in Uganda. *Joan Reynolds*, retired teacher, spent January traveling in that country, meeting with women now organizing in their struggle to upgrade their standard of living.

August 24 -30

Film Festival

Monday 24, 8pm *Another Brother*, tells the story of Vietnam veteran Clarence Fitch, as representative of a generation of African-American men. Film produced and discussed by *Tami Gold*, award winning film maker, Professor, Hunter College Film & Media Studies Department.

Tuesday 25, 8pm *Ningla A-Na* - by Alessandro Cavadini. A feature documentary on the establishment of the Aboriginal Embassy in front of Parliament House, Canberra, in 1972. Commentary by *Carolyn Strachan*, filmmaker.

Wednesday 26, 8pm *Vertigo* - by Alfred Hitchcock. We will examine the idea of erotic female beauty in Hollywood cinema and its implications of sexual difference with the power of the male encapsulated in the hero. Discussion with *Carolyn Strachan*.

Thursday 27, 8pm *Dorothea Lange's* photographs and *John Ford's* film, *Grapes of Wrath*.

How one art form influenced another in the context of the era in which they were created. Slides and film presented by *Gina Bilander*, photographer.

Friday 28, 8pm Fun Night!

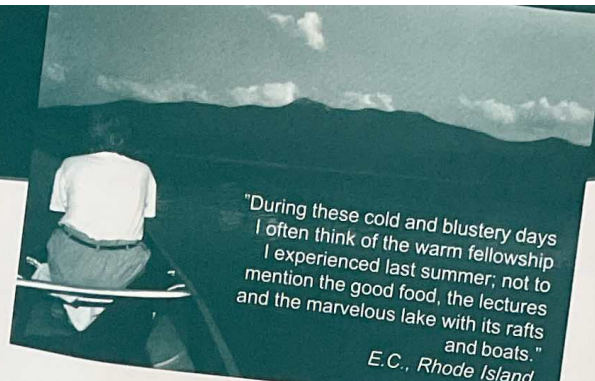
Saturday 29, 10am Film: *Tell the Truth and Run*; *George Seldes* and the American Press. Piercing examination of censorship and suppression. Academy Award nominee for Best Documentary Feature, 1996.

8pm Music! *Patricia Shih* and her band.

Sunday 30, 10am Nature Walk with *Dave Eastman*

Art Programs in August

"During these cold and blustery days I often think of the warm fellowship I experienced last summer; not to mention the good food, the lectures and the marvelous lake with its rafts and boats."
E.C., Rhode Island.



August 30-September 3

Labor Issues

Sunday 30, 8pm Get Acquainted. World Fellowship's History. *Christoph Schmauch*, WF Executive Director.

Monday 31, 8pm Labor and Working with the Left in a Conservative State. *Jan Schaeffer*, New Hampshire AFL-CIO Director.

Tuesday 1, 8pm Labor Law, Good or Bad? *Robert Schwarz*, labor lawyer, *Jan Schaeffer*, and *Nancy deProsse*, union organizer.

Wednesday 2, 8pm The Family and Medical Leave Act. *Robert Schwarz*.

Thursday 3, 8pm Share the Wealth. *Felice Yeskell*.

September 4-8

Labor Day Weekend Music Festival

Friday 4, 8pm Fun Night!

Saturday 5, 10am - Music and Culture of the West Virginia Coalfields. *Michael & Carrie Kline*. Together and separately they have recorded oral testimonies and homemade music in Western Massachusetts, West Virginia, and with the Cherokee people of North Carolina. Making Music; a Children's workshop. With *Marcia Taylor*.

4pm Joyful Noise Community Singing in 2, 3, 4 parts with *Marcia Taylor*.

8pm Concert! *Carrie and Michael* will sing ballads, tent meeting and work songs of the Appalachians, and together with *Marcia* leads the Joyful Noise chorus.

Sunday 6, 10am - Songs of Work and Freedom. *Carrie and Michael*

- More Songs for Children with *Marcia*. 8pm Gather Round with Instrument and Voice. *The Great American Songbook*.

Monday 7, evening: Season's End Party and Free Dance.

Tuesday 8, Breakfast. End of the 58th World Fellowship Summer Season.

September 11-13

NH Peace Action Retreat

Friday-Sunday, September 11-13 with *Frances Crowe*, AFSC field secretary

Body Movement Classes

Panerhythmy

All Summer! with *Joan Reynolds*. Graceful movement in a circle with music, and affirmations to center you for the day. *Feldenkrais* July 6-12 with *Elyse Landseberg*.

Tai Chi

August 17-30 with *Vinnie Edwards*. Objectives include harmony of mind, promotion of health.

Yoga

August 31-September 6 with *Gina Crusco*. Developing awareness and coordinating the breath, the movement and relaxation.



European identity after the two World Wars, why the Community turned to economics rather than politics or culture as the foundation of the union, the vision of the builders and obstacles. *Janet Polasky* is Professor of Modern European History at the University of New Hampshire.

Thursday 6, 8pm The EU -

Contemporary Issues - the lack of popular and democratic input into EU decisions, the role of economic and political elites, the weakness of the European Parliament, and the source of populist protests against certain EU policies. *Aline Kuntz* is Associate Professor of Political Science, University of New Hampshire, specializing in comparative politics/Western Europe.

Friday 7, 8pm Fun Night!

Children's Fellowship Daily Programs

10-12am ages 3-9 • 7:30-9am ages 5-12

Morning programs include an arts/crafts project, games, time in the playground. Evening programs, Sunday-Thursday, feature stories from around the world. The children create a play to perform at Fun Night on Friday.

Parents are responsible for their children at all other times. Baby-sitting is by private arrangement between parents and staff members.





Mission Statement *World Fellowship...*

Offers educational pursuits aimed at renewing body, mind and spirit through our educational programs, environmental harmony, recreational opportunities and the informal sharing of progressive values; Continues in our tradition of over a half century of educational programs intended to allow our guests to arrive at informed positions on global issues;

Sustains environmental harmony through the stewardship of our forest and lakeloft acreage. We model sound environmental practices through our organic gardens and further encourage them through our apprenticeship programs and by promoting the enjoyment and understanding of nature;

Develops a sense of community through broad inclusiveness in guests, staff and programs. We are international, interracial, multicultural and inter-generational. We cultivate respect and appreciation for human values and the worth of all individuals. We endorse the underlying life-affirming values of religions and faith groups, and the right to peace and justice for all peoples.

Brief History of World Fellowship

1893 First Parliament of Religions

1918 World Fellowship of Faiths, an inter-religious, inter-cultural peace organization.

1941 World Fellowship Center founded by Charles and Eugena Weller, and Lola Maverick Lloyd, in Conway (Albany), NH on 290 acres in the White Mountains, with main lodge and Farm House. "In Time of War Prepare for Peace." First summer's program featured a World Government Convention.

1953 Willard and Ola Uphaus became Directors in the McCarthy era.

1958 Purchase of Weller House and additional 30 acres.

1959-60 After 6 years of litigation, Willard Uphaus spent a year in jail in Boscawen, NH for contempt of court. (A victim of the cold War, subversive activity was never established.)

1970 - Christoph and Kathryn Schmauch become Directors

1982 - Uphaus Lodge purchased.

1992 - 51 acres purchased.

1996 - 61 acres purchased.
Total acreage now 432.

Board of Trustees:

Joe Fine and Flo Stern, Chairs

David Dosamantes

Sara Pettit Dosamantes

Patricia Cantor

Howard Fain

Anita Findling

Jake Geller

Cecilia Greene

Marcella Kerr

Peter Lowber

Frances Marcuse

Robert Meeropol

Robert Rosofsky

Sandy Sachs

Anita Shapiro

Jim Sheridan

Norma Varga

Michael Werner

Linda Wheeler



Things to Do in Our Area

During your stay at World Fellowship, you might want to explore the area. The Mt. Washington Valley of the White Mountains offers activities for every interest.



Mountain Climbing - Mt. Chococua in our "front yard"; the Presidential Range, and many others. **Steamer Rides** on Lake Winnepesaukee. **Canoe** down the Saco River. **Lifeguards** and a large beach at nearby White Lake State Park. **Storyland**, Children's amusement park, and **Heritage New Hampshire** - the state's history told by costumed persons and tableaux. **A Children's Museum** in Center Harbor. **The Mt. Washington Auto Road**, and the **Wildcat Mtn. Gondola** in Pinkham Notch. **Scenic Loop** drive over the Kancamagus Highway, up through Franconia Notch, with the rock profile of "The Old Man of the Mountain", the **Flume**, **Cannon Mtn. Gondola**, a side-trip to historic **Bretton Woods Hotel**, and back through **Crawford Notch**. **North Conway** offers outlet and factory stores of designer and outdoor clothing, as well as boutiques and artists galleries. **Summer theater** in Tamworth and North Conway, country dances, area festivals.

DIRECTIONS: World Fellowship is located on NH Route 16, 4 miles north of Chococua, 7 miles south of Conway.

From New York, Route 95 to New Haven; Route 91 to Hartford, Route 84E to Mass Tpk. Tpk E 10 mi to Auburn exit, Route 290 to 495 N to 95N. 95N Exit 4 to the left before Portsmouth, NH goes onto the Spaulding Tpk. Continue to the end (exit 18). The road continues as Route 16. Four miles north of Chococua, our big sign is on the right, Drake Hill Rd. Go one mile up the hill to the main Lodge to check in.

Bus or train to Boston. Bus service by Concord Trailways from Boston's South Station to Chococua. We will pick you up for an extra charge.

Plane service to Portland, ME, 1 1/2 hours away, \$40 pick-up charge.

Driving Times/Distances:

Boston, MA: 125 mi./2.5 hrs.

Portland, ME: 70 mi./1.5 hrs.

Hartford, CT: 235 mi./4.5 hrs.

New York City, NY: 325 mi./7 hrs.

Montreal: 220 mi./5 hrs.

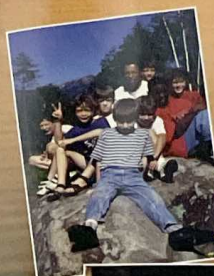
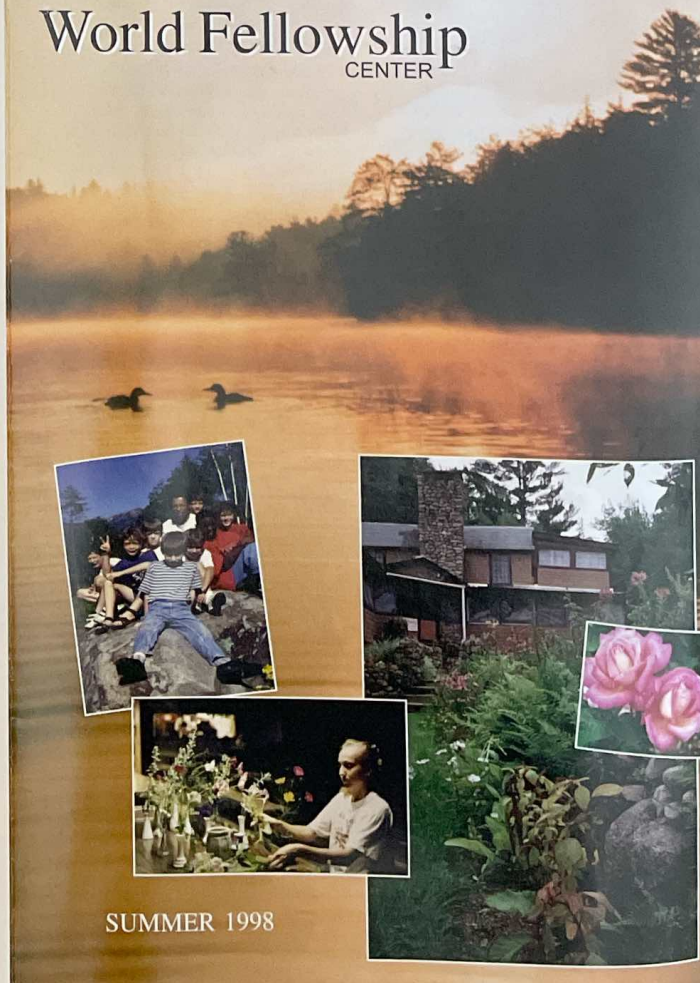


Graphic Design: Jayme Proctor, Intervale, NH
Loon cover photo: Gina Bilander

Non-profit
Organization
U.S. PAID
Permit No. 21
Conway, NH

NEW HAMPSHIRE

World Fellowship CENTER



New Hampshire
World Fellowship Center
P.O. Box 2280
Conway, NH 03818-2280



SUMMER 1998