

A Summer Vacation to Renew Your Spirit

Set amid 455 acres in New Hampshire's White Mountains,

the Center invites people from diverse social, intellectual and cultural backgrounds to share their vacations and ideas in our peaceful, rustic setting. The New Hampshire World Fellowship Center is a vacation center that offers a unique environment to renew body, mind and spirit. Families and singles of all ages quickly become part of the World Fellowship community.

Established in 1941 as a non-profit organization, we have been called a "camp with a social conscience." Charles and Eugenia Weller, social workers with a global perspective, were founders and directors from 1941-1952. Willard and Ola Uphaus, religious leaders and educators, directed the Center from 1953-1969. Their nationally celebrated commitment to civil liberties during the McCarthy period made the Center known throughout the country.



Christoph and Kathryn Schmauch have been Directors since 1970. A native of Germany, Christoph is an ordained minister and ecumenical educator, and Kit is a teacher and administrator.

For 60 years the World Fellowship Center has promoted peace through inter-religious and multi-cultural events, providing opportunities for people of different backgrounds to meet and dialogue on the issues of the day. The environmental beauty and its international flavor are more and more appreciated.

Andrew Davis and Andrea Walsh are Directors Designee and will work with Kit and Christoph this summer of 2000.

They will become Directors in 2001.



Lodging Facilities

With Mt. Chocorua as our backdrop, our facilities run from the valley floor up the ridge of Drake Hill. All our buildings are smoke-free, and have shared bathrooms, kitchen, dining room, and living room facilities.

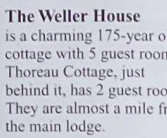


Lloyd Lodge which resembles a century-old New England Inn, is the main building, and houses the office, dining hall, conference room and 17 guest rooms.

The Uphaus Lodge is our most modern facility. It has 9 guest rooms and a view of Mt. Chocorua from a large bay window in the living room.



The Farm House is 200 years old and has 13 guest rooms. The Farm House Cottage, in the same area, has 6 guest rooms. They are 3/4 of a mile from the main lodge.



The Weller House is a charming 175-year old cottage with 5 guest rooms. Thoreau Cottage, just behind it, has 2 guest rooms. They are almost a mile from the main lodge.



All guest rooms are supplied with linens and blankets.

Campsites are available for campers bringing their own tents and equipment, as well as linens, pillows and blankets. Rustic tables are provided.

Recreational Facilities

World Fellowship has frontage on Whitton Pond, the clearest water you will find anywhere. This mile-long lake, nestled in the woods, is a sanctuary for a pair of nesting loons which return every year. It offers you extraordinary experiences of Nature's summertime pleasures: swimming, canoeing, rowboating, fishing, blueberry picking.

- Basketball court • Soccer field • Nature trails
- Volleyball court • Playground - state of the art.

The Recreation Hall, situated by the Farm House, is the site for weekend performances, with a stage, and seating accommodations for 150.

Dining

Using produce from our own organic gardens, our meals are hearty, mostly vegetarian, and served family style. The water from our 450 foot artesian well is pure, delicious, and free of chemical treatments. Breakfast is a buffet. Thursday dinner is a weekly cookout. Sunday noon we serve a traditional "Thanksgiving" turkey dinner. Sunday evening is a buffet. Meal times: 8am; 12:30pm; 6pm.

General Information

All buildings are smoke-free.

No pets, except in Campsites. Dogs must be kept on a leash at all times and cleaned up after. Let us know if you plan to bring one. Beach towels are not supplied. Please bring your own. Guest rooms are supplied with all linens, towels, blankets, pillows. Campers must bring all of theirs.

Be sure to bring warm clothing - New Hampshire nights can be quite cold. Also a flashlight.

"The serenity and beauty of the woods and facilities are matched only by the spirits of the people who are there." FH Chicago



Rates-per person, per day. Same as 1999!

		Weekday	Weekend Fri 3pm-Sun 3pm	Weekly
Adults - Room Rates				
Terrace	Double	\$38.	\$45.	\$258.
	Single	43.	50.	291.
Regular	Double	52.	60.	347.
	Single	58.	65.	385.
Our Best	Double	68.	77.	452.
	Single	74.	83.	491.
Adults - Camping				
	Dinner (1 Meal)	24.	28.	153.
	Bk/Din (2 Meals)	27.	32.	180.
	B/L/D (3 Meals)	33.	38.	215.

Minimum required: One Dinner.

Children: in rooms with parents or camping.
Under 3 in parent's room, \$4.00/day or \$25./week. In campsites, free.

3 & Older % of Adult rate (in parents room)			
Ages 3-5	30%	12-14	60%
6-8	40%	15-21	75%
9-11	50%		

90% for children in separate rooms, regardless of age.

Room rates are per person and include room and 3 meals per day program, all facilities and gratuities. No credit given for missed meals, but box lunches are available.

Weekend rates: Friday 3pm - Sunday 3pm
Weekday rates: Sunday 3pm - Friday 3pm

Sorry, no credit cards. Cash, checks or money orders accepted.

Come early and save!
10% Discount:
June 30 - July 28
for a minimum
of 5 weekdays.

Programs

Daily offerings:

Discussions & lectures (see listings). Most mornings at 10 AM. Evenings at 8 PM.

Children's Programs
10-12 AM, ages 3-9;
7:30-9 PM, ages 5-12.

Body Movement Classes
Scheduled by the instructor.

Other:

Performing Arts - Saturday
Saturday evenings.

Fun Night - Friday
Every Friday; our in-house talent show, guests and staff performing.

Nature Programs - Thursday
Walks and Lectures - as scheduled during the summer.

Reservations

Office Hours: 9am-9pm

Christoph and Kathryn Schmauch
World Fellowship
PO Box 2280
Conway, NH 03818-2280
603-447-2280

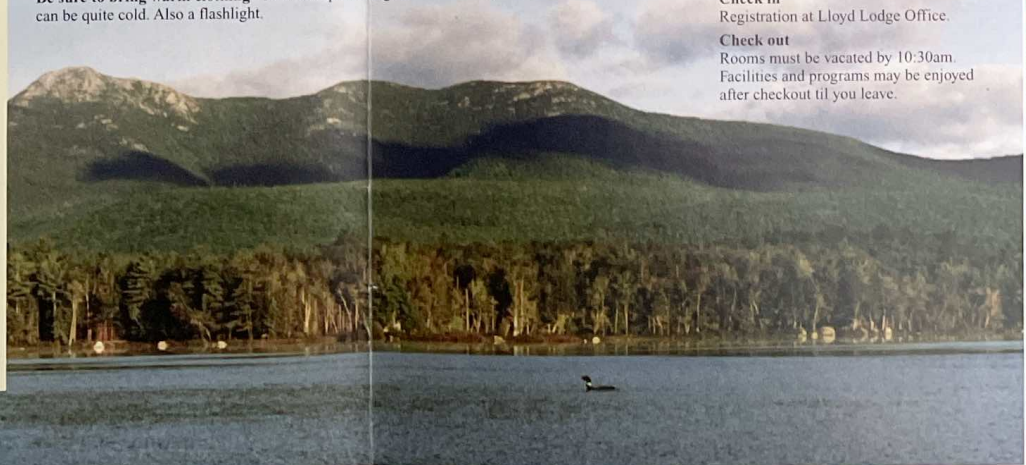
FAX: 603-447-1820
EMAIL: world@landmarknet.net
Website: www.worldfellowship.org

All reservations for rooms and campsites must be made in advance. Weekend reservations will be made for a minimum of two days.

A deposit of 25% of your anticipated bill is required to confirm a reservation. Cancellations with less than 10 days notice, \$50 will be withheld from refund.

Check in
Registration at Lloyd Lodge Office.

Check out
Rooms must be vacated by 10:30am. Facilities and programs may be enjoyed after checkout til you leave.



New Hampshire World Fellowship

Join Us for Our 60th Summer

June 21-28

**26th New Hampshire Symposium
40 Years GDR/10 Years New Länder
East Germany before and since the
Wende: Outcomes and Prognoses**

The final New Hampshire Symposium will look back on 50 years of life in the GDR and in the new German states, and on our ways of perceiving and evaluating the same. Professor *Margy Gerber*, organizer.

**June 30-
July 2**

**July 4th
Weekend
Friday 30, 8pm
"Celebrating 60
Years of World Fellowship."**

Music with *Martha Leader!*

Saturday 1, 10am

"American Exceptionalism."
Why is there no European equivalent for Americanism? Why does every public opinion survey show the US differing more from England, France, Germany, Italy etc, than they do from each other? Why is this difference important. Dr. *Annette Rubinstein*, author of *From Shakespeare to Shaw, and American Literature: Root and Flower*. She was WF's first woman chair, and just celebrated her 90th birthday. Also: Nature Walk with *Peter Benson*, Nature Conservancy, on WF's trails.

8pm Latin Music with "Sol y Canto"!

**Sunday 2, 10am
"Our Greatest Novelist."**
Writing in the cheerful, prosperous, pre-industrial US of the early 19th Century, Herman Melville sensed dangers then unsuspected by his countrymen. Three of his greatest works - *Moby Dick*, *Bartleby: A Tale of Wall Street* and *Benito Cereno* foretell of the development of unbridled individualism, human alienation, and racism.
Dr. Annette Rubinstein.

July 2-9

**Fifth Annual Early
Music & Country
Dance Week
Hausmusik —
Domestic music-
making in the 16th
and 17th centuries"**
**Sunday 2, 8pm
Introductions of
Faculty and Program.**

(Daily schedule available on request).
"There seemed to be no end to the artistry of the faculty and the enthusiasm of the participants."

- an Early Music Week participant in 1998. This year's theme is Hausmusik - primarily German repertoire from the 16th and 17th centuries for vocal and instrumental ensembles.

Early Music & Country Dance Week is a unique music camp which provides opportunities for musicians of all ages. You will encounter:

- focused ensembles for experienced adults
- mixed ensembles for 9-14 year-old musicians with score-reading skills
- activities for younger children (Children's Fellowship)
- Country Dancing for all
- musical activities for all levels of playing experience (grand band & chorus)

With a concentration on Renaissance music, this Fifth Annual Early Music Week particularly welcomes singers, recorder, viol, lute, early wind, and early keyboard players (a = 440 Hz). Some classes are intended to accommodate an even wider variety of other instruments.

Music Faculty: *Julian Cole, Jane Hershey, Chris Rua, Larry Wallach*

Children's Fellowship: *Anne Legêne*
Feldenkrais: *Elyse Landesberg*
Program coordinator: *Christopher Greenleaf*
Please note: Master Class participation costs \$50 for the week's instruction. For details - contact Christopher Greenleaf:
Email: *criter@riconnect.com*
or (evenings) at 401/596-3699.

July 9-16

**Jewish History and Culture Week
Sunday 9, 8pm - Wednesday 12, 10am -
Friday 14, 10am - Saturday 15, 10am.**
A Film Festival with Comments and Discussion. Reflecting on various aspects of the Jewish Experience.

**Monday 10, 10am and 2pm, 8pm -
Tuesday 11, 10am and 2pm.**
"Camp Kinderland - Redefining a Heritage of Progressive Jewish Secularism for a New Generation." A two-day program of exploration and display involving film, photography, oral presentation and discussion with *Alice Schechter*, Camp Director, *Billy Rothberg*, President, and 2 representative campers

**Tuesday 11, 8pm
"Location, Location, Location -
Vilna, Odessa and Long Island, New York.
Modernity and the Dynamics of Jewish Identity,"
Henry 'Stretch' Jacobs**

**Wednesday 12, 8pm
"The Role of Yiddish in the History
of Jewish Radicalism."**
Miriam Hartman (Mickey) Flacks is a scientific editor, Yiddish translator and community activist in Santa Barbara, California. Co-Editor, *Children of A Vanished World*, photographs of Eastern European Jewish Children taken by Roman Vishniac in 1935-37, including translated Yiddish poems, songs and street rhymes of the period.

**Thursday 13, 10am Nature Walk
with Dave Eastman, ecologist, forester.**

8pm. "Jews and the Left."
Why have Jews played a disproportionate role in a wide range of movements for social justice? Has Jewish 'liberalism' in the US declined in recent decades as affluence of American Jews increased? How have conflicts about affirmative action, school integration and 'black-Jewish' tensions affected the Jewish community? What's the future for "Jewish radicalism?" Dick

Flacks is a professor of sociology at U. of California, Santa Barbara, a founding member of SDS, author of *Making History: The American Left and the American Mind* and many articles.

Friday 16, 8pm Fun Night!

**Saturday 15, 4pm "Lift Every Voice:
Music in Survival & Social Change" - a
workshop with Laura Wetzler and
Janeice Thompson.**

**8 pm Laura Wexler & Janeice Thompson
in "Jewels of the Diaspora:
A Concert Celebration of African-American and
Jewish Song" - from diverse sources, sung in
English, Hebrew, Ladino, Yiddish and Amharic
(Ethiopian).**

**Sunday 16, 10am "Repairing the World in
the 21st Century."**
Bringing all of the events of Jewish Week 2000 together. *Dick Flacks, Mickey Flacks, Billy Rothberg, "Stretch" Jacobs.*



July 16-20

**Central America and the Future
of International Solidarity**

Sunday 16, 8pm
"Meet *Andy Davis* and *Andrea Walsh* - World Fellowship's Directors Designee." They will tell of their own work in Central America.

**Monday 17, 8pm "Guatemala:
Another Critical Moment"**
Felipe and *Elena Ixcot* first came to the U.S. through the Sanctuary movement in the early 1980s. They are founders of the International Maya League and Guatemala Watch of Vermont, and have lectured on Guatemalan politics and Mayan cosmology.

**Tuesday 18, 8pm "Is Colombia
Becoming (Yet) Another
El Salvador?"**
Salvadoran-born activist *Mario Davila*, on the staff of the New England Regional Office of the American Friends Service Committee for over a decade, is particularly well-situated to address the lessons and experiences of the Salvadoran solidarity movement for those questioning U.S. involvement in Colombia.

**Wednesday 19, 8pm "Seattle and
the Future of Solidarity."**
The anti-WTO protests unleashed new forms of international grassroots struggle. What can these new movements learn from the Central America solidarity movement, and how will they transform our conception of international solidarity? Mike Prokosch was New England director of CISPES (the Committee in Solidarity with the People of El Salvador) from 1986 on. Since 1998 he has coordinated the globalization program of United for a Fair Economy, which supports local education and organizing nationwide.

**Thursday 20, 10am Nature Walk
with Dave Eastman**

**8pm "The Art and Life of
Vincent Van Gogh."**
Slide show and commentary: *Gina Bilander.*

July 21-27

**A WF Program Sampler
Friday 21, 8pm Fun Night!**

**Saturday 22, 10am "International
Adoption"**
Myra Alpers is the author of *International Adoption Handbook: How to make foreign adoption work for you*, and the forthcoming book, *Dim Sum, Bagels & Grits: A multicultural parenting sourcebook*. She lives in New York with her daughter, who was born in China in 1995.

**8pm Music by the Casco Bay
Tumblers - Klezmer!**

**Sunday 23, 10am
"The Chinese Democracy Movement and
the Future of China."**

Yang, Jian-li is president of the Foundation for China in the 21st Century and a research fellow at Harvard's Kennedy School of Government.

**8pm
"Abolish the
Death
Penalty."**

US isolation on the issue of capital punishment. *Bilal LeL-amine*, member of the National Campaign to Abolish the Death Penalty will bring us up to date.

Monday 24, 8pm

**"Egypt's Fascinations: a
Country of Connections
and Contradictions."
Tony Simone** is the principal in the American School in Cairo, Egypt.

Tuesday 25, 8pm
"The Human Rights Movement in the Southern Cone: Chile, Argentina, Uruguay."

Louis Bickford, Associate Director, Global Studies Program, University of Wisconsin, Madison.

**Wednesday 26, 8pm
"Bicycling through Ireland" -**
Slides and music with *Steve and Sally Swenson*, school psychologist and musician respectively.

**Thursday 27, 10am Nature Walk
with Dave Eastman**

**8pm Environment:
"What is a Tree Farm?"**

Peter Pohl, local extension officer for Carroll County explains the significance of recognizing WF for good stewardship of its land by designating our acreage as a "Tree Farm."



**Nature Photography
Workshop
July 17-21, 10am,
with Gina Bilander,
photographer.**

**July 28-30
1860's and 1960's
Friday 28, 8pm Fun
Night!**

**Saturday 29, 10am
Heroes of
Reconstruction.**

123 years after it ended, Reconstruction remains one of the most controversial and least understood eras of American history. Author, *Stan Turkel*, will rescue seven remarkable people (five black Congressmen and two white Reconstruction era governors) from the dustbin of history.

8pm Music:
Deborah Silverstein, singer/songwriter, with her fellow singers from "Taproot", *Rebecca Brown* and *Gail Rundlett*.

**Sunday 30, 10am "Another Look at the
1960's: It Wasn't All Bad."**
Philip Reiss is Professor Emeritus of history at SUNY, and currently writing a novel on this decade.

July 30-August 3

**Health Care Priorities
Sunday 30, 8pm "Health Services in
Honduras: Ethical and Political Issues of
Doing Overseas Health Work."**
Linda Jo Stern, Master in Public Health and a nutritionist, is Executive Director of S. Jamaica Plain Health Center and Projects Director of the Brigham and Women's Hospital Medical Missions to Honduras.

**Monday and Tuesday 31&1, 8pm
"Toward a Healthier Society."**
Judy Norsigian, Program Director of the Boston Women's Healthbook Collective, and co-editor of *Our Bodies, Ourselves*, will address issues of health care reform, drug ads directed at consumers, gene therapy, hormones, tobacco and women, reproductive health, and much more.

Wednesday 2, 8pm "Going to Travel?"
What you need to know to stay well, and medicines to take with you, plus survival techniques for emergency situations." *Frank Hubbell, DO*, is founder and Director of SOLO, an internationally known school which trains for outdoor rescue and emergency medicine. He is also a partner in Conway Walk-in.



**Introduce a Friend
to World Fellowship**

Give someone a birthday gift of a weekend or week at World Fellowship. Gift certificates are available and can be sent at your request.

Ship Center er Season...



Thursday 3, 8pm **White Mountain Lore and Forests Forever.**

Kristen Loomis of the Society for the Preservation of New Hampshire Forests, will show these two slide programs, illustrating the work of the Society over 100 years.

Aug 4-6

Progressive Ideals Expressed in Art and Writing

Friday 4, 8pm Fun Night!

Saturday 5, 10am "Drawing the Line: Making a Difference Through Art."

Ricardo Levins Morales will be in exploring ways in which art can affect political and cultural change. We will draw on his experience as an artist/organizer and director of the Northland Poster Collective.

8 pm Music: **Mike Palter and Lynne Jackson** present "A Celebration of Love!"

Sunday 6, 10am "The Historian as Curandera".

Aurora Levins Morales will read from her book, *Remedios*, a retelling of the history of Puerto Rican women, and discuss the radical uses of history. She has published several books.

8pm World Fellowship History. Highlights of 60 years.

Christoph Schmauch, Executive Dir., WF.



August 11-13

Progressive

Politics in 2000?

Friday 11, 8pm Fun Night!

Saturday 12, 10am

Fred Newdom teaches Social Welfare Policy at Smith College, School of Social Work.

He will lead us in exploring the relationship between the retreat from the welfare state and the whole array of progressive policies - related to labor, the environment, women's rights, etc., - and the movement to a global economy. The demands of capital for increased profit and decreased accountability and social responsibility are enormous.

8pm Celtic Music

with *Jane Wilcox Hively*, vocalist, harpist, and *Jonathan Hively*, on Irish and Scottish bagpipes, hammered dulcimer, saw and the penny whistle.

Sunday 13, 10am

Fred Newdom continues.

August 13-17

The Europeans

After two World Wars, and the Holocaust of the 20th Century, a United States of Europe is emerging.

What kind of Europe will it be, and who are today's Europeans?

Sunday 13, 8pm

"Potholes and Landmines on the Way to a New Europe."

Irene Runge, sociologist and director of the Jewish Cultural Center in Berlin, Germany.

Monday 14, 8pm

"Can European Jews Become a Model for European Integration?"

Transcending ethnic, cultural and minority identities.

Irene Runge

Tuesday 15, 8pm "Seeds of Peace in Europe: a family history."

Gottfried Paasche, professor of sociology at York University in Toronto, will share his family's history (his Jewish grandfather, Hans Paasche, was a Navy captain, who became a pacifist, and was a pallbearer for Rosa Luxemburg, and the other grandfather was Kurt von Hammerstein, Chief of Staff of the German Army from 1930 to his resignation in 1934).

Wednesday 16, 8pm **Silent Courage:**

Maria Theresa von Hammerstein and her *Battle Against Nazism*, tells the story of *Gottfried Paasche's* mother, a documentary film sponsored by B'nai Brith and the German government.

Thursday 17, 8pm "New Hampshire's White Mountains - a vision of wildness"

An intimate four season photographic visit. Through literature, poetry and photographs, *Ned Therrien* explores the beauty and harshness of these revered mountains.



August 22-24

How do We Learn?

Tuesday 22, 8pm "Children Discuss Schools and Education."

An Open Forum for WF Kids. Moderated by *Justine Fitzgerald*, Coordinator of the WF Children's Program. She is a poet, adjunct

lecturer with the Department of English at The City College of New York, as well as a regular substitute teacher at the Manhattan School for Children.

Wednesday 23, 8pm "Meet WF's International Staff."

Why are they here and what have they learned this summer.

Thursday 24, 4pm Nature Walk with *Peter Benson*.

8pm "What is the Work of The Nature Conservancy?"

Northern NH program manager, *Peter Benson*, answers all your questions, and the importance of putting land into "conservation easement."

August 25-27

Cuba: Changing Policies?

Friday 25, 8pm Fun Night!

Saturday 26, 10am

"Where are US-Cuba Relations Going?"

Doomed to crisis? A look at trends in both countries and in the Cuban-American Community. *Ramon Bueno* has been active for 20 years among Cuban-Americans seeking change in US-Cuba relations.

8pm Music with *Dean Stevens*

Sunday 27, 10am

"Visual Thinking for Beginners."

No one lacks imagination, only the ability to access it as adults: learn ways to access creativity and some visual skills. *Debra Weisberg*, sculptor, exhibits nationally and teaches at Boston College and Suffolk University.

August 27 - 30

Film Festival

Sunday 27, 8pm **Visions of Light**,

American Film Institute documentary about the history of cinematography. Presented by photographer *Gina Bilander*

Monday 28, 8pm **The Good Fight**,

documentary about the Abraham Lincoln Brigade in the Spanish Civil War. Presented by *Sam Sills*, a documentary filmmaker.

Tuesday 29, 8pm

Bill Moyers: Healing and the Mind, segment of series that looks at how knowledge of the mind/body connection is being integrated into some hospital settings.

Primary director: Chana Gazit; secondary director: Sam Sills. Presented by *Sam Sills*.

Wednesday 30, 8pm **Rear Window** - by *Alfred Hitchcock*.

This revamped and recently reopened film has had the critics talking. Let's look at this masterpiece ourselves for its exploration of voyeurism and cinematic eroticism. *Carolyn Strachan*, filmmaker and teacher at the Borough of Manhattan Community School.

August 31 - September 5

Labor Day Weekend Music Festival

Celebrate with *Kit and Christoph* their 32 summers, and last season, as *World Fellowship's* Directors.

Thursday 31, 10am Nature Walk with *Dave Eastman*

8pm Dancing!

Musicians for the weekend *Danny Harper, Taylor Whiteside and Marcia Taylor.*

Friday 1, 8pm Fun Night!

Saturday 2, 10am workshop

8pm Grand Performance

Sunday 3, 10am workshop

8pm Party Time!

Monday 4, 10am Nature Walk

with *Dave Eastman*.

8pm World Fellowship Cabaret!

M.C. - *David Schmauch*

Tuesday 5, 6th Summer Season closes with Breakfast.



October 14, Saturday: Farewell Party Celebration for Kit and Christoph in Amherst, MA.

Come for a reunion with old friends, a video of WF's 60th summer season, music, games, a potluck supper - and more.

For details, contact *Sara Dosamantes*: sdosamantes@targetsite.com 617-583-8544

Children's Fellowship Daily Programs

10-12am ages 3-9 • 7:30-9 ages 5-12

Morning programs include an arts/crafts project, games, time in the playground. Evening programs, Sunday-Thursday, feature stories from around the world. The children create a play to perform at Fun Night on Friday.

Parents are responsible for their children at all times. Baby-sitting is by private arrangement between parents and staff members.



August 7-10

Environment - Global and Local.

Monday 7, 8pm "Planet for Sale: the Economy versus the Ecology."

What corporate globalization requires is the opposite of what the biosphere demands. *Richard Levins*, Professor, Harvard School of Public Health, will discuss the politics of ecological sanity.

Tuesday 8, 8pm "Greening Cities".

Joan Roelofs, professor at Keene State University, illustrates with a slide show how people are achieving this.

Wednesday 9, 8pm "Skins and Skulls."

Explore the fascinating mammals of NE through this hands-on interactive program for all ages! *Claire Long*, naturalist for Appalachian Mountain Club.

Thursday 10, 10am Nature Walk

with *Dave Eastman*

8pm "Good Stewardship of World Fellowship's 455 acres".

Barry Keith, forester, will talk about how he has managed WF's land for over 20 years, and the continuing effects of the ice storm of Jan. 98.

August 18-20

Africa

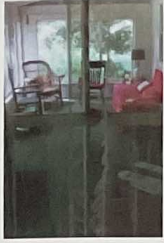
Friday 18, 8pm Fun Night!

Saturday 19, 10am

"People and Politics in East Africa."

The East African countries of Uganda, Tanzania and Kenya have each followed different development paths since achieving independence in the 1960's. *Marc Sommers*, international consultant and a Research Fellow, Boston University's African Studies Center, will discuss and compare Tanzania's socialist approach with Kenya's market-oriented policies, and then consider the current Ugandan experiment under President Museveni.

8 pm "Mango Groove" - steel drum band! Music - dance - limbo!



Mission Statement

World Fellowship...

Offers educational pursuits aimed at renewing body, mind and spirit through our educational programs, environmental harmony, recreational opportunities and the informal sharing of progressive values.

Sustains environmental harmony through the stewardship of our forest and lakefront acreage. We model sound environmental practices through our organic gardens and by promoting the enjoyment and understanding of nature;

Develops a sense of community through broad inclusiveness in guests, staff and programs. We are international, interracial, multicultural and inter-generational. We cultivate respect and appreciation for human values and the worth of all individuals. We endorse the underlying life-affirming values of religions and faith groups, and the right to peace and justice for all peoples.

Brief History of World Fellowship

1893 First Parliament of Religions

1918 World Fellowship of Faiths, an inter-religious, inter-cultural peace organization.

1941 *World Fellowship Center* founded by Charles and Eugenia Weller, and Lola Maverick Lloyd, in Conway (Albany), NH on 290 acres in the White Mountains, with main lodge and Farm House. "In Time of War Prepare for Peace." First summer's program featured a World Government Convention.

1953 Willard and Ola Uphaus became Directors in the McCarthy era.

1958 Purchase of Weller House and additional 30 acres.

1959-60 After 6 years of litigation, Willard Uphaus spent a year in jail in Boscawen, NH for contempt of court. (A victim of the Cold War, subversive activity was never established.)

1970 - Christoph and Kathryn Schmauch become Directors.

1982 - Uphaus Lodge purchased.

1992-98, 135 acres adjoining the original property purchased for preservation, and Nature Trails were constructed.

During their 30 year tenure, organic gardens, children's programming, weekly cultural offerings, an international German Symposium, Jewish History and Early Music Weeks, and a staff of international students have been established. They will leave to their successors a greatly expanded, thriving Center and program, which has gained respect in the local, national, and international communities.



Things to Do in Our Area

During your stay at World Fellowship, you might want to explore the area. The Mt. Washington Valley of the White Mountains offers activities for every interest.

Mountain Climbing - Mt. Chocorua in our "front yard"; the Presidential Range, and many others. Steamer Rides on Lake Winnepesaukee. Canoe down the Saco River. Lifeguards and a large beach at nearby White Lake State Park. Storyland. Children's amusement park, and Heritage New Hampshire - the state's history told by costumed persons and tableaux. The Mt. Washington Auto Road, and the Wildcat Mt. Gondola in Pinkham Notch. Scenic Loop drive over the Kancamagus Highway, up through Franconia Notch, with the rock profile of "The Old Man of the Mountain", the Flume, Cannon Mtn. Gondola, a side-trip to historic Bretton Woods Hotel, and back through Crawford Notch. North Conway offers outlet and factory stores of designer and outdoor clothing, as well as boutiques and artists galleries. Summer theater in Tamworth and North Conway, country dances, area festivals.



DIRECTIONS: World Fellowship is located on NH Route 16, 4 miles north of Chocorua, 7 miles south of Conway.

From New York, Route 95 to New Haven; Route 91 to Hartford, Route 84E to Mass Tpk. Tpk E 10 mi to Auburn exit; Route 290 to 495 N to 95N. 95N Exit 4 to the left before Portsmouth, NH goes onto the Spaulding Tpk. Continue to the end (exit 18). The road continues as Route 16. Four miles north of Chocorua, our big sign is on the right, Drake Hill Rd. Go one mile up the hill to the main Lodge to check in.

Bus or train to Boston. Bus service by Concord Trailways from Boston's South Station to Chocorua. We will pick you up for an extra charge.

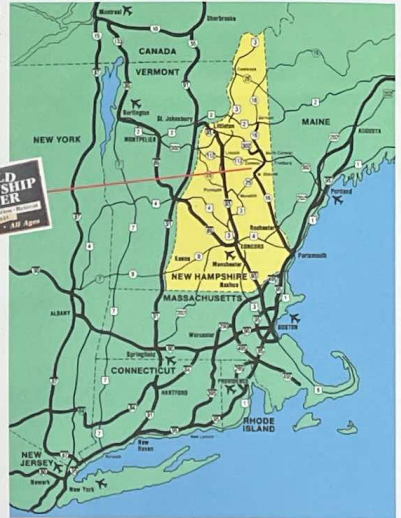
Plane service to Portland, ME, 1 1/2 hours away. \$50. pick-up charge.

Driving Times/Distances:

Boston, MA: 125 mi./2.5 hrs. **New York City, NY:** 325 mi./7 hrs.

Portland, ME: 70 mi./1.5 hrs. **Montreal:** 220 mi/5 hrs.

Hartford, CT: 235 mi./4.5 hrs.



Graphic Design: jaymesline.com
Photography by: Gina Bilander, Alessandro Cavadini, Nora Bonosky, Ellen Silverberg, Kit & Christoph Schmauch

Non-profit
Organization
U.S. PAID
Permit No. 21
Conway, NH

New Hampshire
World Fellowship Center
P.O. Box 2280
Conway, NH 03818-2280

Return Service Requested



October 14 - Farewell Party for Kit and Christoph (details inside)

60th Anniversary!

NEW HAMPSHIRE
World Fellowship
CENTER



SUMMER 2000